

HT220: laboratory continuous flow HTST/ UHT systems

## Small-Scale Pasteurisation and Sterilisation

Quality & Functionality at the highest level

Tubular Heat Exchanger

Plate Heat Exchanger

Direct Steam Injection

Scraped Surface Heat Exchanger



### Introduction of the OMVE HT220 HTST/UHT range

OMVE introduces the next generation high quality small-scale continuous flow HTST/UHT processing systems suitable for R&D, QA and pilot plant applications within the different industries.

The HT220 miniature HTST/ UHT system is a robust design that gives the operator maximum flexibility in processing various products. **No more compromises!**

#### Features

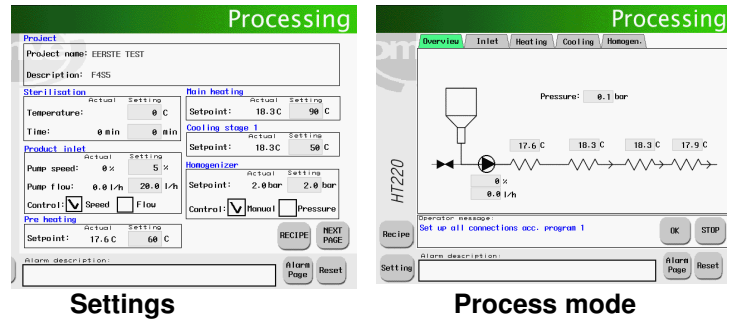
- Only Industrial components
- Fully automatic CIP with lid on feed hopper
- Modular build
- Supports different kinds of heat exchangers
- In-line operation with other equipment
- Low product hold up
- Spray/splash-proof
- Closed frame
- Full automated control
- Broad range of optional accessories

#### Benefits

- Reliable & Robust
- Quick, easy and save cleaning
- Proven technology with full flexibility
- Processing a broad range of products
- Simulates complete industrial process line
- Saves costs and time
- Suitable for use in wet areas
- Lower noise level and Hygienic design
- Very easy to control
- Simulates your plant

### Control

By using the touch screen you have a clear overview of all parameters. The set parameters of a trial can be stored under a dedicated name or recipe. Different other processes can be controlled from the same touch screen. This makes the system even easier in use.



### Heat exchangers

The **HT220-PT** system is suitable for a Tube-in-Tube Heat Exchanger and/or a Bolted Plate Heat Exchanger.

The **HT220 DSI** system is available with a tubular or plate heat exchanger for the pre-heat section and a Direct Steam Injection for the main heat section. The automatic regulated steam injection prevents contamination and clogging in the steam line and gives constant flow rate and accurate heating.

The special designed Flash Cooler prevents water incorporation, burn-on, splashing into the product. The Flash Cooler has a hygienic design without dead corners and is suitable for SIP.

The HT220 DSI is also available in combination with an indirect heated main heat section (up to 150°C [302°F]).

The **HT220 SSHE** system consists of high performance scraped surface heat exchangers. The SSHE has a hygienic design and is suitable for pressures up to 10 bar(g) [145 psi(g)] (higher on request). The shaft and blades are interchangeable depending on the application. Up to 4 barrels fit on a standard frame.

### Optional Accessories

- Mixer in feed hopper
- Different feed hopper
- Flow control!
- Data logging
- Variable holding tubes
- External heated holding tubes up to 10 minutes
- Sterilisation link
- Additional Boiler
- Etc

### Different capacities

OMVE supplies the laboratory HTST/UHT systems with different nominal flow rate capacities. All systems have variable flow rates. The hereunder types are based on a nominal flow rate. The sizes of the heat exchangers and the boiler capacities are different per system.

### Specifications

Types	HT220-10	HT220-20	HT220-50
<b>Process parameters</b>			
Nom. flow rate	10 l/h @ 150°C [2.2 gph @ 302°F]	20 l/h @ 150°C [4.4 gph @ 302°F]	50 l/h @ 150°C [11 gph @ 302°F]
Variable flow rate	10 – 60 l/h [2.2 – 13.2 gph]	10 – 60 l/h [2.2 – 13.2 gph]	20 – 100 l/h [2.2 – 22 gph]
<b>Electrical requirements</b>	400V / 3ph / 50Hz / 16A or 32A (depending on configuration) (3ph + N + E)		
	Other electrical requirements available on request		